



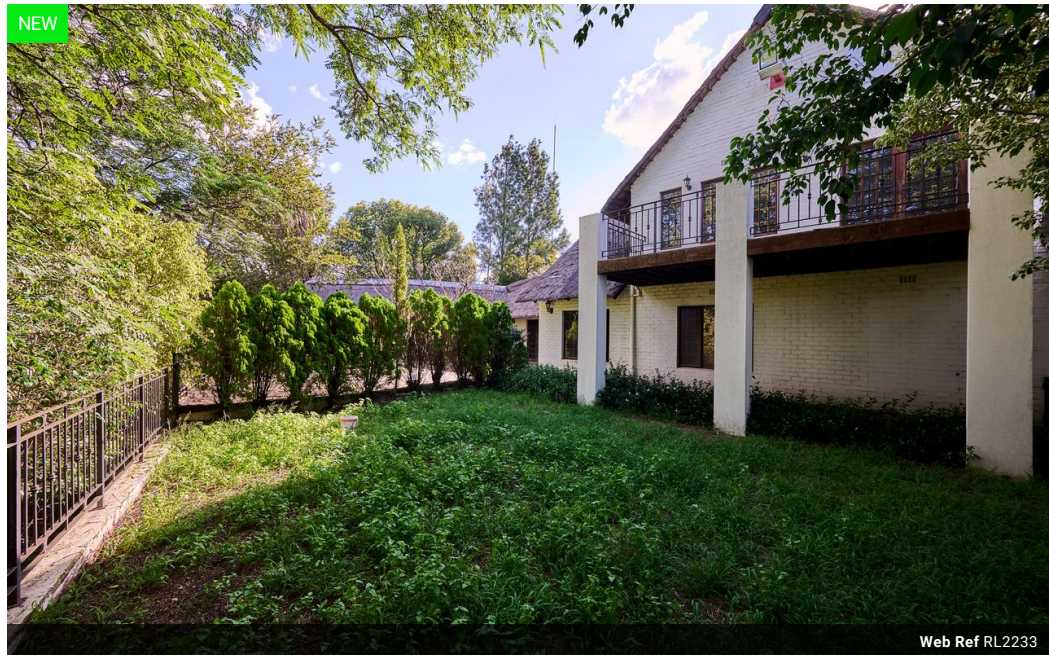
Julie McDonald  
083 326 6544  
julie@platinum.co.za

Contact Platinum Office

011 8058888

91 Carlswald Estate  
Walton Road  
Carlswald  
Midrand  
1684

NEW



Web Ref RL2233



R6,499,000

 4
  3
  4

**Monthly Bond Repayment** R65,979.73

Calculated over 20 years at 10.75% with no deposit.

**Transfer Costs** R578,656.00 **Bond Costs** R70,535.00

These calculations are only a guide. Please ask your conveyancer for exact calculations.

**Monthly Rates** R2,661.5

### Country Life Opportunity

Discover an exceptional investment opportunity in the prime location of Carlswald Agricultural Holdings! This charming old farmhouse boasts solid wooden floors and multiple living areas, creating a warm, inviting atmosphere. Featuring three downstairs bedrooms and two bathrooms, along with an upstairs bedroom and bathroom, this home offers ample space for family and guests.

Equipped with multiple stables, tack rooms, and a horse arena, horse enthusiasts will find this property irresistible. Enjoy outdoor leisure with a refreshing swimming pool, four garages, and additional outside accommodation. A borehole and storage tank provide essential resources for any gardening or farming ventures.

With plenty of room for growth, this property is perfect for those seeking a countryside lifestyle or exploring future development plans....

### Features

**Pets Allowed** Yes

#### Interior

Bedrooms	4
Bathrooms	3
Kitchens	1
Recep. Rooms	2
Studies	1
Furnished	No

#### Exterior

Garages	4
Security	No
Dom. Accom.	1
Pool	Yes
Views	True

#### Sizes

Floor Size	600m <sup>2</sup>
Land Size	14,086m <sup>2</sup>