



Steven McLaren
Non-Principal Property
Practitioner
Registered with PPRA
(FFC 114 128 9)
083 2338888
steven@platinum.co.za

Contact Platinum Office

011 8058888

91 Carlswald Estate
Walton Road
Carlswald
Midrand
1684

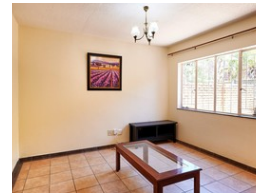
3 Bedroom Duplex Sold in Halfway Gardens

SOLD



SOLE MANDATE

Web Ref RL1179



R1,275,000

3 2 1

Monthly Bond Repayment R13,160.40

Calculated over 20 years at 11% with no deposit.

Transfer Costs R36,867.00 **Bond Costs** R27,105.00

These calculations are only a guide. Please ask your conveyancer for exact calculations.

Monthly Levy R1,400 **Monthly Rates** R660

3 bedroom duplex for sale in Cecilia Lodge

3 Bedroom Duplex for sale in Halfway Gardens

This wonderful home is located in a sought after complex, Cecilia Lodge. Cecilia lodge is an established complex and is centrally located in Midrand. It's architecture reflects a Facebrick look, with units set amongst established gardens. The complex consists of only 22 units. The property offers the following features:

- 3 spacious bedrooms, all of which are fitted with carpeted floors and built in cupboards.
- 2 neat bathrooms and a guest loo downstairs. The family bath offers a shower while the main offers a tub.
- The open plan tiled lounge offers great space.
- The open plan dining area is positioned off the lounge. The dining also offers a bar and doors leading on to the patio.
- The kitchen offers a white oak finish with melamine counter tops....

Features

Pets Allowed Yes

Interior

Bedrooms	3
Bathrooms	2
Kitchens	1
Recep. Rooms	2
Furnished	No

Exterior

Garages	1
Carports / Parkings	1
Security	No
Pool	No
Views	False

Sizes

Floor Size	137m²
------------	-------

Extras

Fiber in the complex

