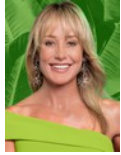




Andrew Pearse
Principal Property Practitioner
Registered with PPRA
(FFC 023 387 4)
083 6528888
andrew@platinum.co.za



Melanie Pearse
Non-Principal Property Practitioner
Registered with PPRA
(FFC 023 996 3)
083 3900000
melanie@platinum.co.za

Contact Platinum Office

011 8058888

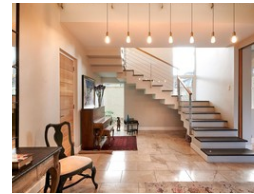
91 Carlswald Estate
Walton Road
Carlswald
Midrand
1684

4 Bedroom House Sold in Waterfall Country Estate



SOLE MANDATE, STUDENT ACCOMMODATION

Web Ref RL1210



R12,499,000

Monthly Bond Repayment R129,013.23

Calculated over 20 years at 11% with no deposit.

Transfer Costs R1,272,642.00 **Bond Costs** R99,035.00

These calculations are only a guide. Please ask your conveyancer for exact calculations.

Monthly Levy R3,617

4 Bedrooms 4 Bathrooms 2 Garages

4 Bedroom House Sold in Waterfall Country Estate

This majestic country home is set in a quite cul-de-sac close to the greenbelt and within easy walking distance of Reddam Waterfall.

It has a generous, spacious layout with airy volume and lots of sunlight permeating the home.

Extensive application of marble and white Oak on the floors, doors and panel work create a sense of class and tranquility.

Numerous sliding doors lead out from the kitchen and North-facing living areas to the stunning garden and pool area.

The 4 bedroom suites are upstairs, all North facing with lovely vistas. The 4 en-suite bathrooms are beautifully and tastefully fitted and finished in top quality bathroom ware.

This is a family home that will be loved and cherished - make it yours!

Extra features include: Large separate 1 bedroom cottage or deluxe staff suite | Separate outdoor laundry | Laundry...

Features

Pets Allowed Yes

Interior

Bedrooms	4
Bathrooms	4
Kitchens	1
Recep. Rooms	4
Studies	1

Exterior

Garages	2
Security	Yes
Dom. Accom.	1
Pool	Yes
Views	Yes

Sizes

Floor Size	754m ²
Land Size	1,442m ²

