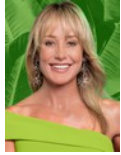




Andrew Pearse
Principal Property Practitioner
Registered with PPRA
(FFC 023 387 4)
083 6528888
andrew@platinum.co.za



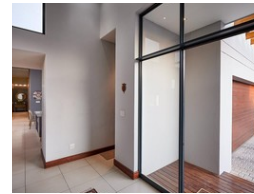
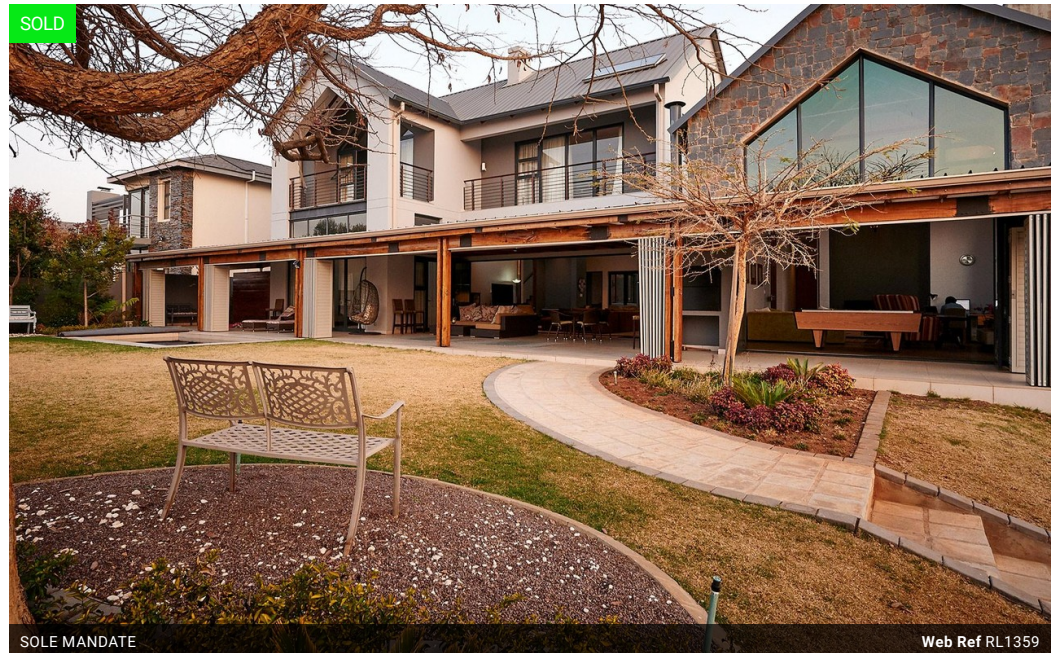
Melanie Pearse
Non-Principal Property Practitioner
Registered with PPRA
(FFC 023 996 3)
083 3900000
melanie@platinum.co.za

Contact Platinum Office

011 8058888

91 Carlswald Estate
Walton Road
Carlswald
Midrand
1684

4 Bedroom House Sold in Waterfall Country Estate



R8,999,000

🛏️ 4 🛁 4 🚗 2

Monthly Bond Repayment R92,886.63

Calculated over 20 years at 11% with no deposit.

Transfer Costs R865,104.00 **Bond Costs** R80,035.00

These calculations are only a guide. Please ask your conveyancer for exact calculations.

Monthly Levy R3,617

4 Bedroom House Sold in Waterfall Country Estate

From the moment you walk through the front door of this beautifully designed home, you are met with a sense of light and inviting warmth. It is by no coincidence that this was the brief to the "Architects of Justice" on which they executed with flair and distinction.

The sun-drenched "winter lounge" is a delight to the senses, with double volume vaulted ceilings, off-shutter flute, combustion fireplace and wooden laminate floors. You could almost be forgiven for not looking any further.

As you continue into the heart of the home you are welcomed by a Martin Meyer precision designed kitchen where quality is a given. The layout of the kitchen with open plan dining area /lounge and fireplace lends itself to large-scale entertaining. This space is further enhanced by the large stacking doors leading onto the covered patio...

Features

Pets Allowed	Yes				
Interior		Exterior		Sizes	
Bedrooms	4	Garages	2	Floor Size	542m ²
Bathrooms	4	Security	Yes	Land Size	1,175m ²
Kitchens	2	Pool	Yes		
Recep. Rooms	5	Views	True		
Furnished	No				

