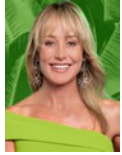




Andrew Pearse
Principal Property Practitioner
Registered with PPRA
(FFC 023 387 4)
083 6528888
andrew@platinum.co.za



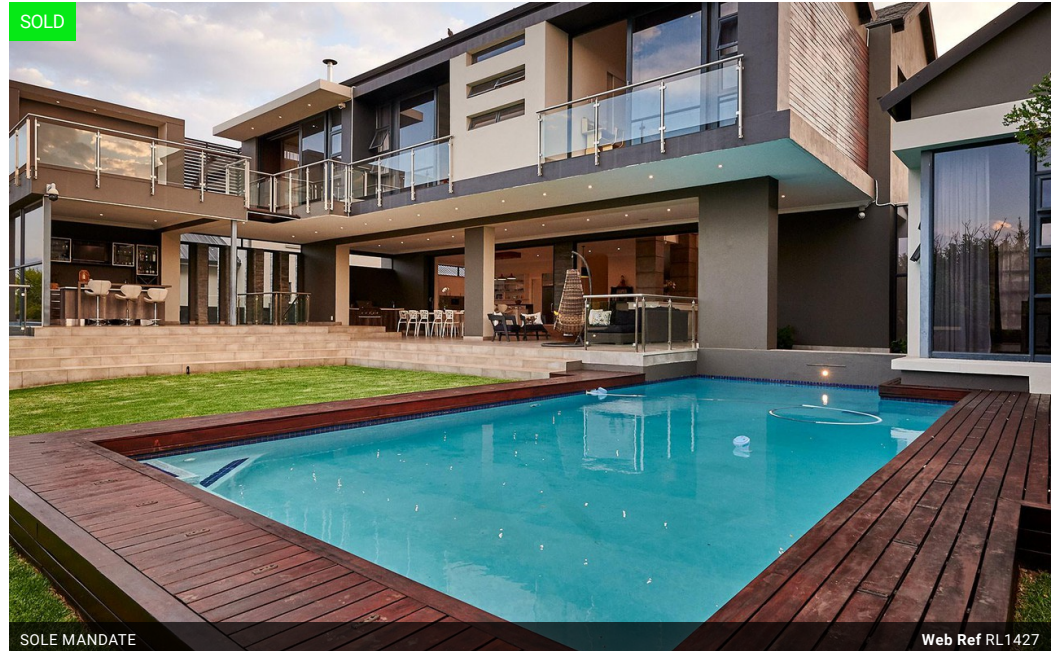
Melanie Pearse
Non-Principal Property Practitioner
Registered with PPRA
(FFC 023 996 3)
083 3900000
melanie@platinum.co.za

Contact Platinum Office

011 8058888

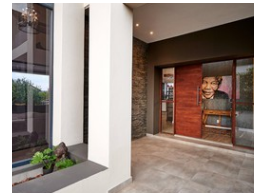
91 Carlswald Estate
Walton Road
Carlswald
Midrand
1684

4 Bedroom House Sold in Waterfall Country Estate



SOLE MANDATE

Web Ref RL1427



R9,999,000

Monthly Bond Repayment R103,208.52
Calculated over 20 years at 11% with no deposit.

Transfer Costs R980,566.00 **Bond Costs** R84,785.00
These calculations are only a guide. Please ask your conveyancer for exact calculations.

Monthly Levy R3,617

🛏️ 4 🚿 3 🚗 3

4 Bedroom House Sold in Waterfall Country Estate

This modern contemporary home with spectacular street appeal is situated in a prime position in Waterfall Country Estate. It offers the ideal lifestyle for families being walking distance from Reddam Waterfall, and having nearby access to the 35km walking/ jogging paths & the cycling trail.

It is a Down-to-Earth Architects masterpiece (built by Henning Construction) and includes 4 large bedrooms with 3 en-suite (with privately located guest suite downstairs), an open plan array of spacious and seamless family and entertainment areas downstairs consisting of a double volume lounge, dining room, kitchen, generous covered patio (with Syam gas braai) and an inviting outdoor bar with "man-cave" cellar.

The bright high-gloss white kitchen is highly specced with numerous SMEG appliances including coffee machine :) and a separate...

Features

Pets Allowed	Yes		
Interior		Exterior	
Bedrooms	4	Garages	3
Bathrooms	3	Security	Yes
Kitchens	1	Dom. Accom.	1
Recep. Rooms	3	Pool	Yes
Studies	1	Views	Yes
		Sizes	
		Floor Size	603m ²
		Land Size	1,177m ²

