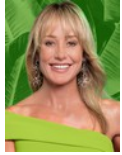




Andrew Pearse
Principal Property Practitioner
Registered with PPRA
(FFC 023 387 4)
083 6528888
andrew@platinum.co.za



Melanie Pearse
Non-Principal Property Practitioner
Registered with PPRA
(FFC 023 996 3)
083 3900000
melanie@platinum.co.za



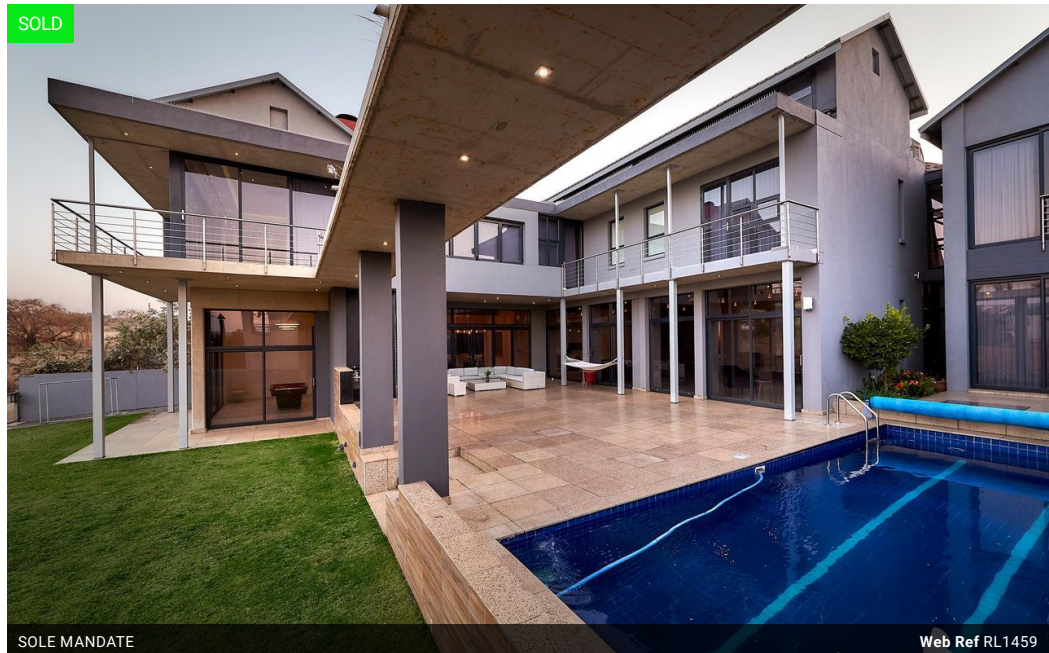
Annalize Morris
Non-Principal Property Practitioner
Registered with PPRA
(FFC 121 984 9)
082 3477305
annalize@platinum.co.za

Contact Platinum Office

011 8058888

91 Carlswald Estate
Walton Road
Carlswald
Midrand
1684

SOLD



SOLE MANDATE

Web Ref RL1459



R14,999,000

Monthly Bond Repayment R154,817.94

Calculated over 20 years at 11% with no deposit.

Transfer Costs R1,592,347.00 **Bond Costs** R108,535.00

These calculations are only a guide. Please ask your conveyancer for exact calculations.

Monthly Levy R4,201 **Monthly Rates** R3,617

5 4.5 3

Contemporary Architectural Masterpiece

Set on one of the very best greenbelt stands in Waterfall Country Estate, this unique home was designed by Savage Dodd architects. Stylish use of concrete form sculpture, rock cladding and coloured glass, create distinctive elevations unparalleled in the estate. While the pictures speak for themselves, this minimalistic modern space features 3 large bedrooms in the main house, with a lavish guest suite (including kitchenette) overlooking the heated pool. The master suite has stunning views across the greenbelt, with a luxurious bathroom, featuring double showers and a spa bath alongside a closed wood burning fireplace. The purpose-built gym could easily be converted into a fifth bedroom, if desired. Four reception rooms provide plenty of room for stretching out and entertaining, with the added benefit of a home theatre and two...

Features

Pets Allowed		Yes			
Interior		Exterior		Sizes	
Bedrooms	5	Garages	3	Floor Size	882m ²
Bathrooms	4.5	Security	Yes	Land Size	1,150m ²
Kitchens	1	Dom. Accom.	1		
Recep. Rooms	5	Pool	Yes		
Studies	2	Views	Yes		

