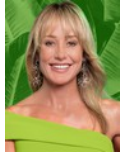




Andrew Pearse

Principal Property Practitioner
Registered with PPRA
(FFC 023 387 4)
083 6528888
andrew@platinum.co.za



Melanie Pearse

Non-Principal Property Practitioner
Registered with PPRA
(FFC 023 996 3)
083 3900000
melanie@platinum.co.za



Annalize Morris

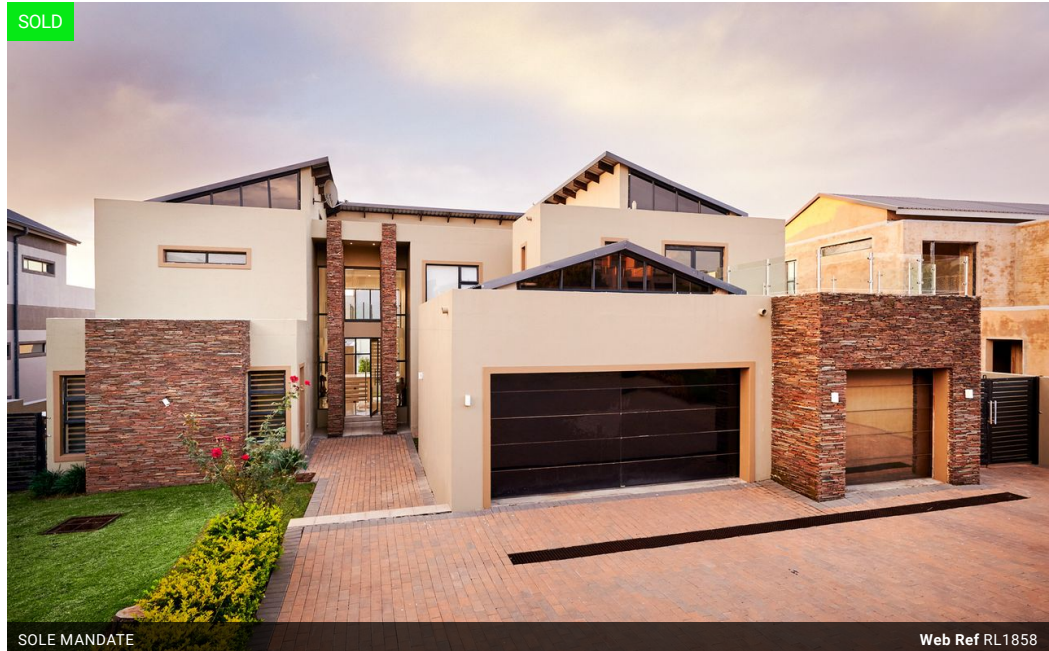
Non-Principal Property Practitioner
Registered with PPRA
(FFC 121 984 9)
082 3477305
annalize@platinum.co.za

Contact Platinum Office

011 8058888

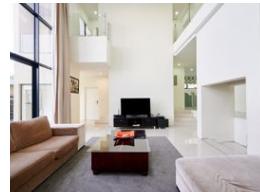
91 Carlsward Estate
Walton Road
Carlsward
Midrand
1684

SOLD



SOLE MANDATE

Web Ref RL1858



R5,999,000

Monthly Bond Repayment R60,903.58

Calculated over 20 years at 10.75% with no deposit.

Transfer Costs R517,697.00 Bond Costs R65,785.00

These calculations are only a guide. Please ask your conveyancer for exact calculations.

Monthly Levy R4,572

5 5.5 3

OPPORTUNITY TO COMPLETE LARGE 5 BED HOME IN GREAT LOCATION

Here is an opportunity for a project-minded individual – a mostly completed family home in close proximity to the Reddam Waterfall schools. North facing with solid design principles, this home could be finished and transformed into a spectacular contemporary home. Stacked rock cladding and glass balustrades are a few of the completed finishes.

The double volume glass entrance leads into a bright home, filled with natural light. To the left, there is a guest cloakroom and large study, office, or playroom, with high windows for privacy. The open plan living area begins with the dining room, overlooking a sunken lounge that has floor-to-ceiling glass revealing the rim flow pool. Lofty ceilings allow for maximum light and air flow, accentuated by the off-white palette. The kitchen is further down from the dining room, with sleek...

Features

Pets Allowed Yes

Interior

Bedrooms	5
Bathrooms	5.5
Kitchens	1
Recep. Rooms	4
Studies	1
Furnished	No

Exterior

Garages	3
Security	Yes
Dom. Accom.	1
Pool	Yes
Views	True

Sizes

Floor Size	615m ²
Land Size	1,072m ²

