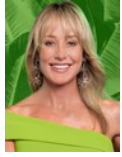




Andrew Pearse
Principal Property Practitioner
Registered with PPRA
(FFC 023 387 4)
083 6528888
andrew@platinum.co.za



Melanie Pearse
Non-Principal Property Practitioner
Registered with PPRA
(FFC 023 996 3)
083 3900000
melanie@platinum.co.za



Annalize Morris
Non-Principal Property Practitioner
Registered with PPRA
(FFC 121 984 9)
082 3477305
annalize@platinum.co.za

Contact Platinum Office

011 8058888

91 Carlswald Estate
Walton Road
Carlswald
Midrand
1684



Web Ref RL2077



R15,499,000

Monthly Bond Repayment R159,978.88
Calculated over 20 years at 11% with no deposit.

Transfer Costs R1,659,929.00 **Bond Costs** R108,535.00
These calculations are only a guide. Please ask your conveyancer for exact calculations.

Monthly Levy R4,960

5 5.5 4

BIG, BOLD, AND BEAUTIFUL 5-BEDROOM HOME ON THE GREENBELT

Stunning, well-balanced architecture sets the tone for this designer home, with contemporary finishes and masses of space, poised on its excellent greenbelt location. Dazzling in white, with accents of black, the stark contrasting palette works wonderfully with the abundant natural light, softened by the artistic wood panelling features and round mirrors.

The impressive glass entrance nestles between the twin double garages, set far enough back from the road to allow for off-street parking. The vast open plan living area will take your breath away – steps lead down into a polished lounge, dining and kitchen space that overlooks the sparkling pool and garden. The double volume dining area has stacking doors directly to the pool, which has a shallow half perfect for small children, and a more 'grown up' rim pool section. The...

Features

Pets Allowed Yes

Interior
Bedrooms 5
Bathrooms 5.5
Kitchens 1
Recep. Rooms 4
Furnished No

Exterior
Garages 4
Carports / Parkings 4
Security Yes
Dom. Accom. 1
Pool Yes
Views True

Sizes
Floor Size 708m²
Land Size 1,400m²

Extras
Fireplace Boma Gazebo

