



Roger Snelgar

Non-Principal Property Practitioner
Registered with PPRA (FFC 124 361 5)
083 307 9463
roger@platinum.co.za



Annalize Morris

Non-Principal Property Practitioner
Registered with PPRA (FFC 121 984 9)
082 3477305
annalize@platinum.co.za



Andrew Pearse

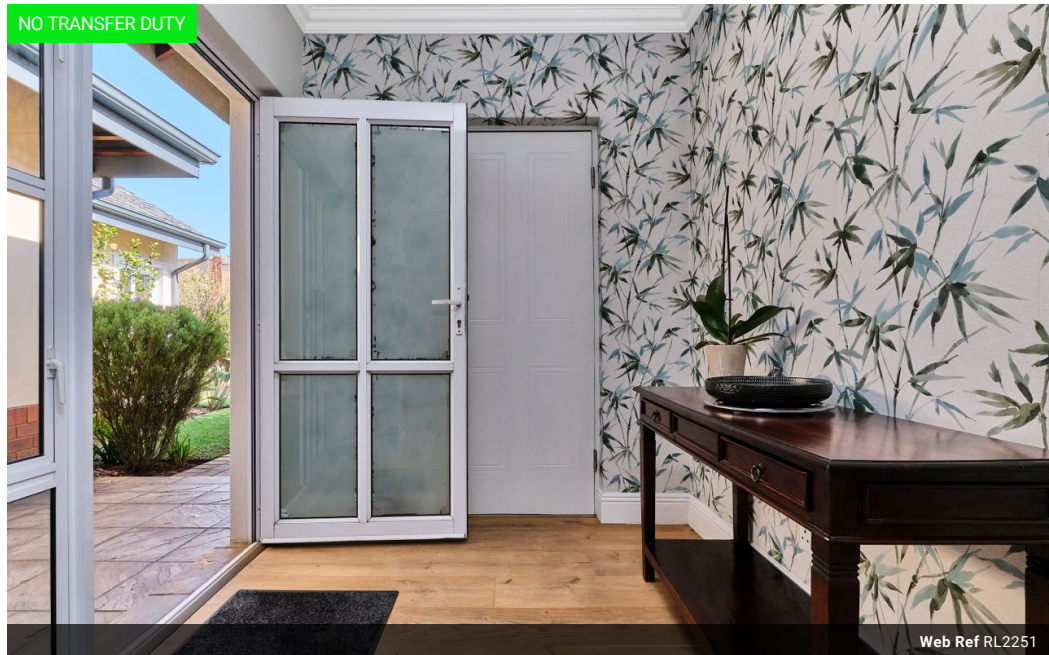
Principal Property Practitioner
Registered with PPRA (FFC 023 387 4)
083 6528888
andrew@platinum.co.za

Contact Platinum Office

011 8058888

91 Carlswald Estate
Walton Road
Carlswald
Midrand
1684

NO TRANSFER DUTY



Web Ref RL2251



R5,500,000

Monthly Bond Repayment R55,837.59

Calculated over 20 years at 10.75% with no deposit.

Transfer Costs R462,807.00 **Bond Costs** R65,785.00

These calculations are only a guide. Please ask your conveyancer for exact calculations.

Monthly Levy R7,675

3 2 2

Just move in!

Indulge in the epitome of luxury living with this recently renovated 3-bedroom home situated in the illustrious Waterfall Valley Mature Lifestyle Estate, an esteemed enclave within the award-winning Waterfall City.

This sumptuous home boasts modern finishes, including an open-plan layout, a beautifully fitted kitchen, and two opulent bathrooms, one e-suite. The expansive living area seamlessly flows out to a tiled and covered patio, perfect for hosting lavish soirées or enjoying quiet moments of solace. Additional features such as a double garage, a water tank (piped into the house), piped gas, and solar system ensure convenience and eco-friendly living.

Residents enjoy access to the prestigious Club House, equipped with top-tier amenities and a vibrant community atmosphere. Immerse yourself in a secure, active, and...

Features

Pets Allowed Yes

Interior

Bedrooms	3
Bathrooms	2
Kitchens	1
Recep. Rooms	2
Furnished	No

Exterior

Garages	2
Carports / Parkings	2
Security	Yes
Pool	Yes
Views	True

Sizes

Floor Size	230m ²
Land Size	624m ²