



Andrew Pearse
Principal Property Practitioner
Registered with PPRA
(FFC 023 387 4)
083 6528888
andrew@platinum.co.za



Melanie Pearse
Non-Principal Property Practitioner
Registered with PPRA
(FFC 023 996 3)
083 3900000
melanie@platinum.co.za



Annalize Morris
Non-Principal Property Practitioner
Registered with PPRA
(FFC 121 984 9)
082 3477305
annalize@platinum.co.za

Contact Platinum Office

011 8058888

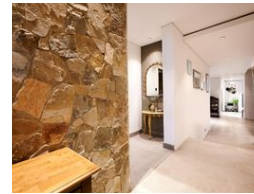
91 Carlswald Estate
Walton Road
Carlswald
Midrand
1684

SOLD



SOLE MANDATE

Web Ref RL1676



R7,799,000

Monthly Bond Repayment R79,177.71

Calculated over 20 years at 10.75% with no deposit.

Transfer Costs R727,118.00 **Bond Costs** R75,285.00

These calculations are only a guide. Please ask your conveyancer for exact calculations.

Monthly Levy R2,843

🛏 5 🚿 5 🚗 3

MODERN FAMILY HOME WITH GREAT VIEWS

Located in an elevated position, affording superb views over the greenbelt, this contemporary four-bed home is spacious and practical. In a palette of grey, brown wood and black, the screeded floors and cement wash feature walls create a bold and streamlined appearance, that is also bright and welcoming. Rock clad walls and double volume spaces accentuate the height and flow, with numerous stacking doors that blend the boundaries to outdoors.

A bedroom (or study), opening onto a neat courtyard, is located to the left of the entrance, alongside a bathroom with shower. Down a few steps, the dining room is large and airy, with sliding doors for an al fresco feel. A few more steps down take you into the open plan kitchen and lounge. The kitchen is centred around a marble topped island, with an induction stove, and features all...

Features

Pets Allowed Yes

Interior

Bedrooms	5
Bathrooms	5
Kitchens	1
Recep. Rooms	3
Furnished	No

Exterior

Garages	3
Security	Yes
Dom. Accom.	1
Pool	Yes
Views	False

Sizes

Floor Size	502m ²
Land Size	672m ²

